



Keene Memorial Library Renovation & Addition

APRIL 26, 2018

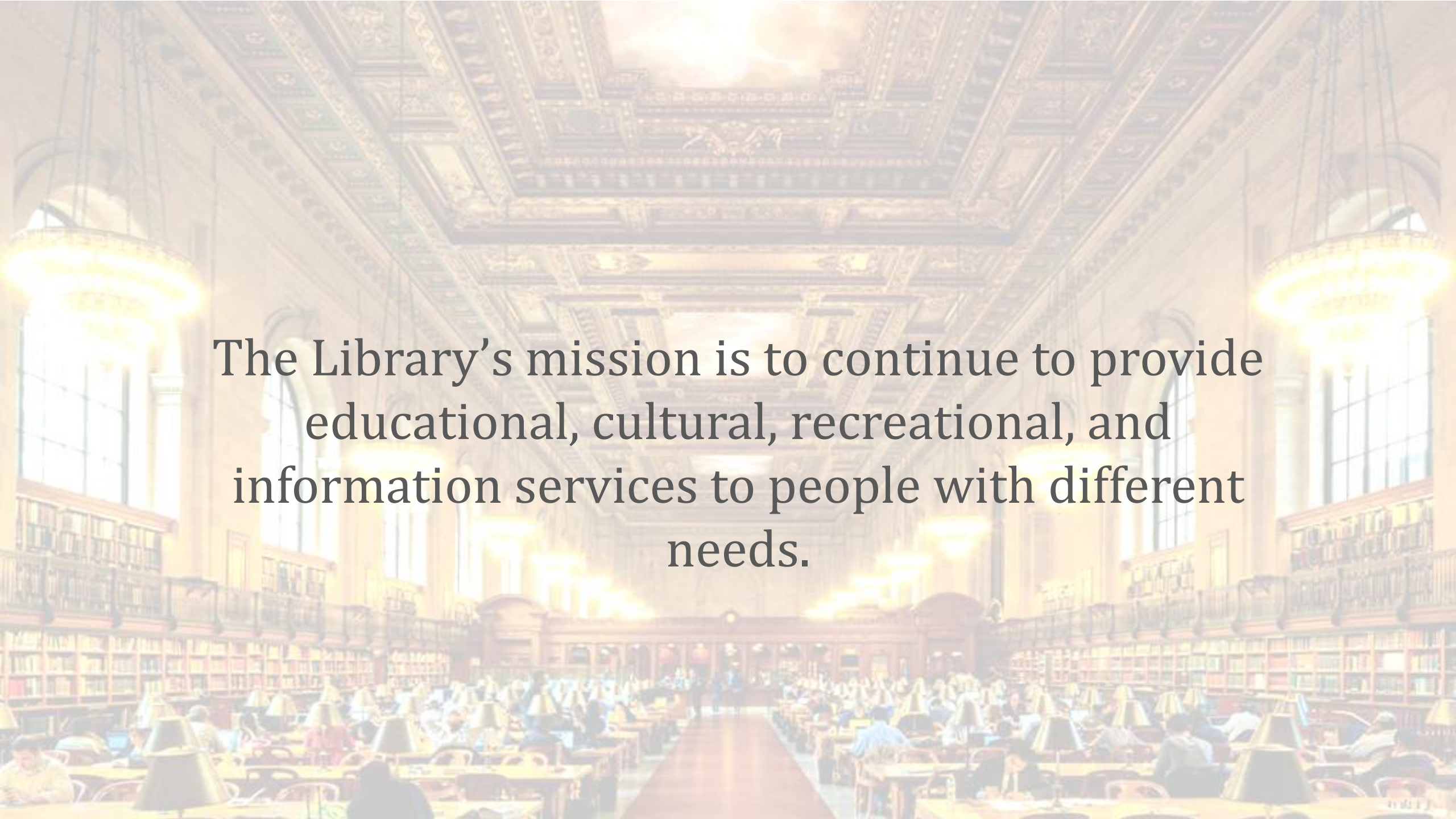


ALLEY·POYNER
MACCHIETTO
ARCHITECTURE

Town Hall Meeting Agenda

April 26th

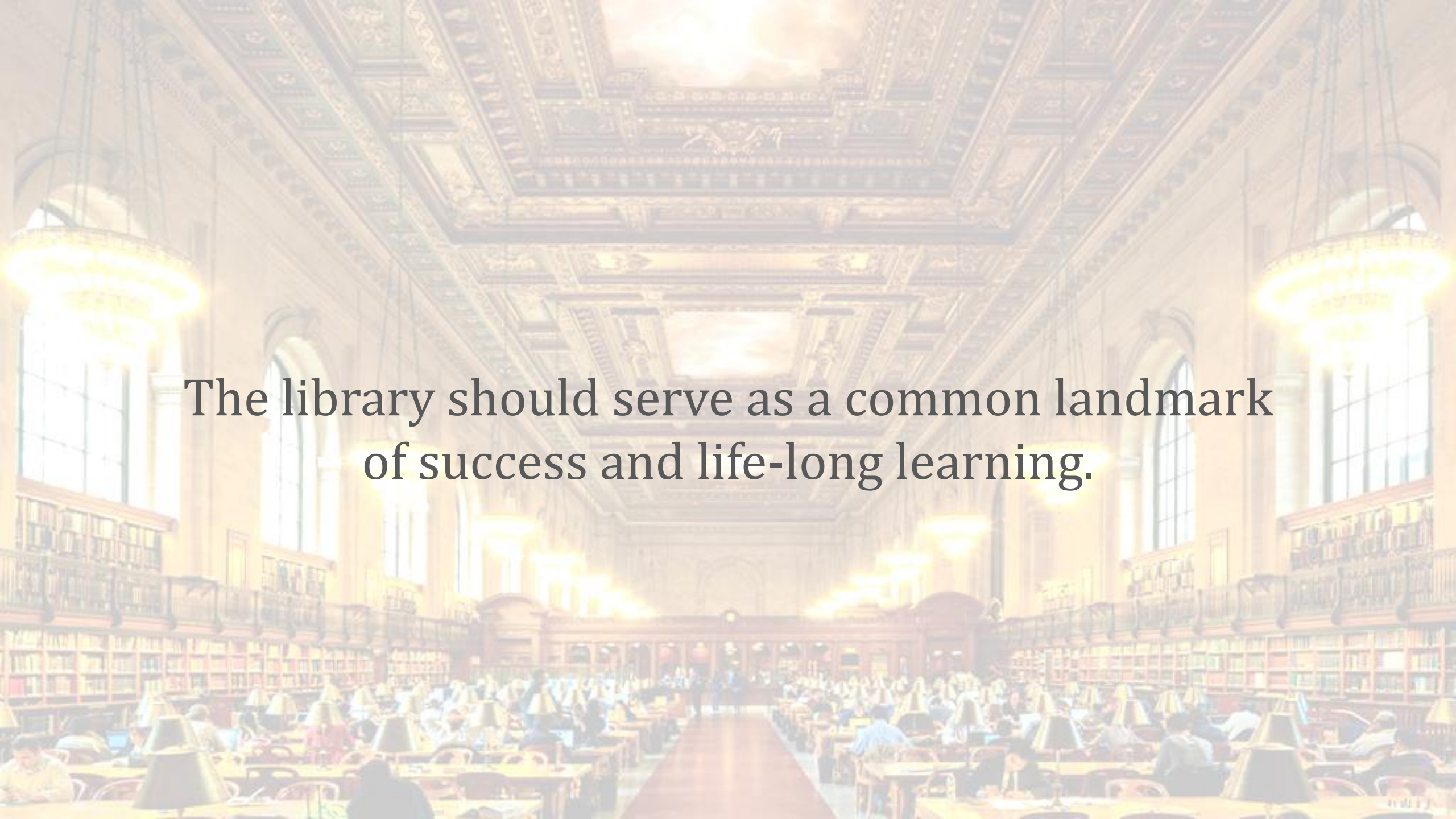
- Review Process
- Community Feedback
- Review Space Needs Program
- Conceptual Floor Plans
- Proposed Materials
- Conceptual Renderings
- Order of Magnitude Cost Estimate
- Questions

The background image shows a grand, historic library interior. The ceiling is high and features intricate, ornate designs with a central skylight. Large, arched windows on the sides allow natural light to enter. The walls are lined with tall, dark wood bookshelves filled with books. In the foreground and middle ground, there are numerous long wooden study tables arranged in rows. Each table is equipped with a small, adjustable desk lamp. Several people are seated at the tables, engaged in reading or study. The overall atmosphere is one of quiet scholarship and intellectual pursuit.

The Library's mission is to continue to provide educational, cultural, recreational, and information services to people with different needs.

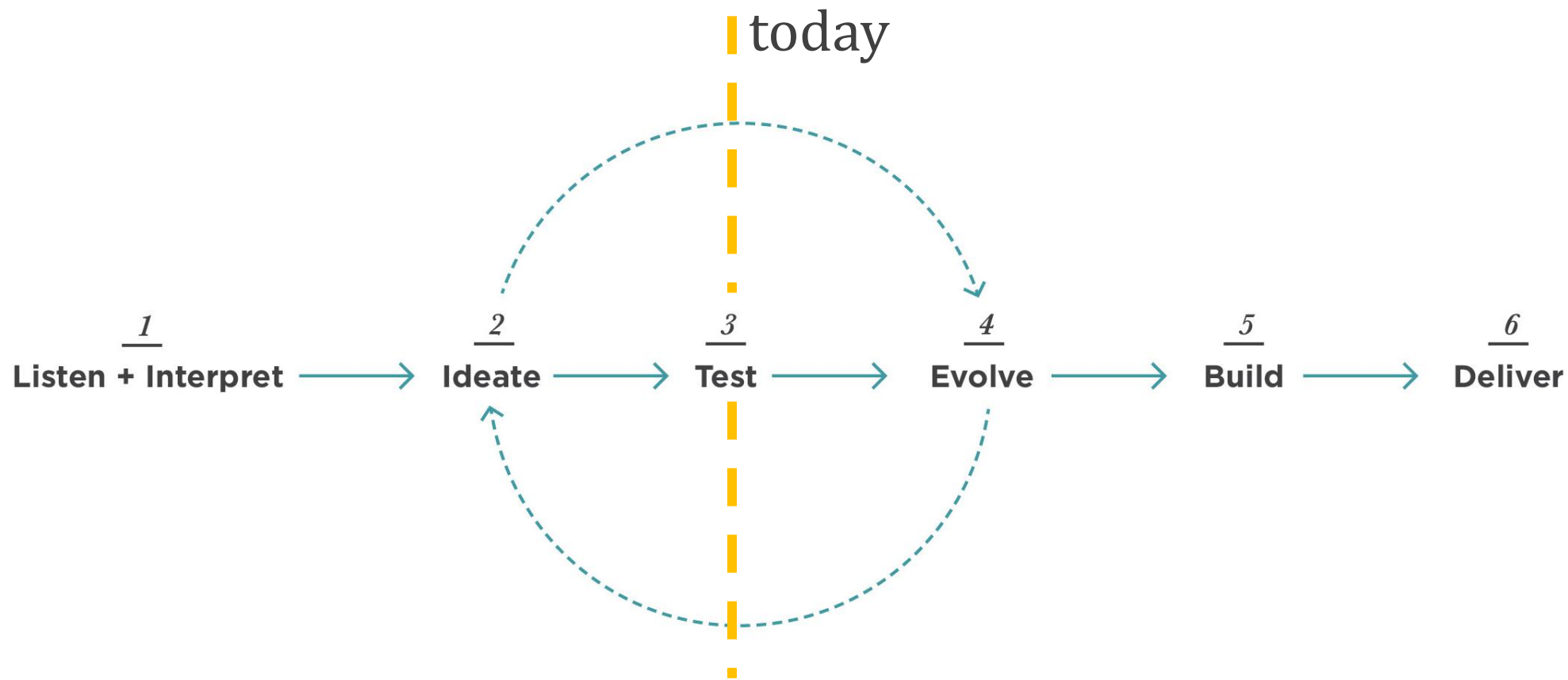
The background image is a photograph of a large, historic library. The room has a high, vaulted ceiling with intricate decorative patterns. Large, arched windows on the upper level allow natural light to enter. The walls are lined with tall bookshelves filled with books. In the foreground and middle ground, there are numerous wooden study tables arranged in rows, each with a small lamp. People are seated at these tables, engaged in reading or study. The overall atmosphere is one of quiet scholarship and intellectual pursuit.

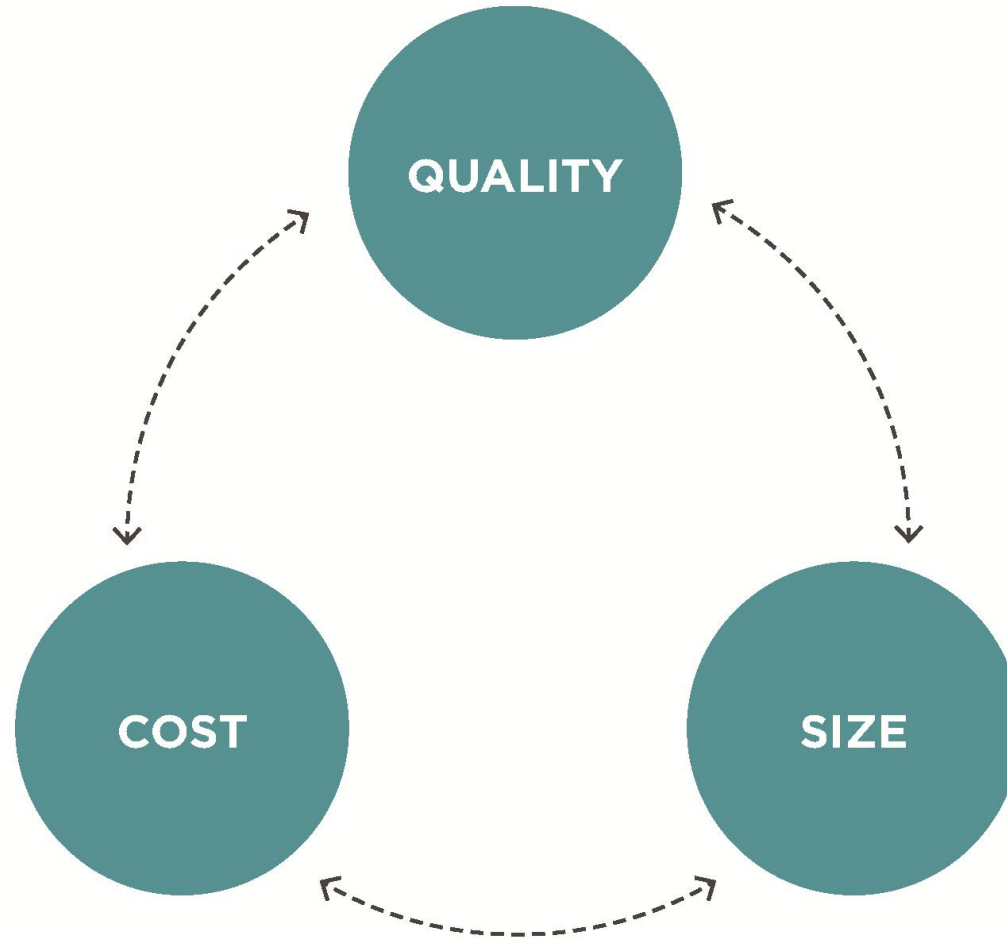
The library of the 21st century should be the cultural focal point for the community.

The image shows a vast, historic library interior. The ceiling is exceptionally high and features intricate, ornate decorations with a central skylight. Large, arched windows on the upper level allow natural light to enter. The walls are lined with tall, dark wood bookshelves filled with books. On the ground floor, rows of wooden study tables are arranged, each equipped with a small, adjustable desk lamp. Numerous people are seated at these tables, engaged in reading or study. A long, polished wooden aisle runs down the center of the room, leading towards the far end of the library. The overall atmosphere is one of quiet scholarship and intellectual pursuit.

The library should serve as a common landmark
of success and life-long learning.

Our Process





Community Feedback

Survey Summary

Top 3 Reasons People Use the Library

To borrow
materials.
73.33%

To attend a
library
program.
25.19%

To attend a
meeting held
at the library
24.44%

Top 3 Reasons People **DON'T** Use the Library

I get the
information I
need from the
internet
60%

I have
resources
available at
work/school/o
ther.
37.14%

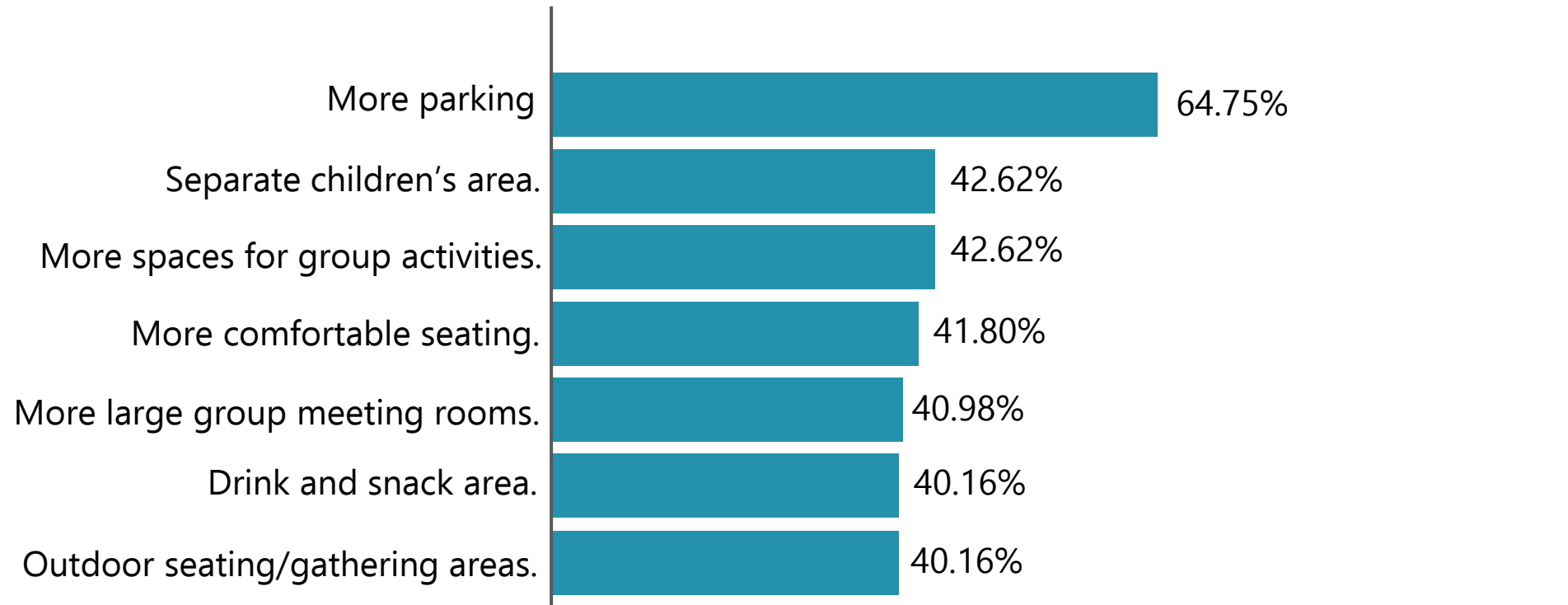
I buy my own
books/
magazines.
31.43%

Which of the following do you
wish the library had more of?
(top 5 answers)

1. Entertainment/educational events (musical performances, guest lectures, etc.) – 34.43%
2. Coffee/vending machines. – 31.97%
3. Books for adults. – 31.15%
4. Variety of meeting spaces. – 28.69%
5. Art and gallery space. – 26.23%

Survey Summary

Which of these do you think would improve the library? (top 5 answers)



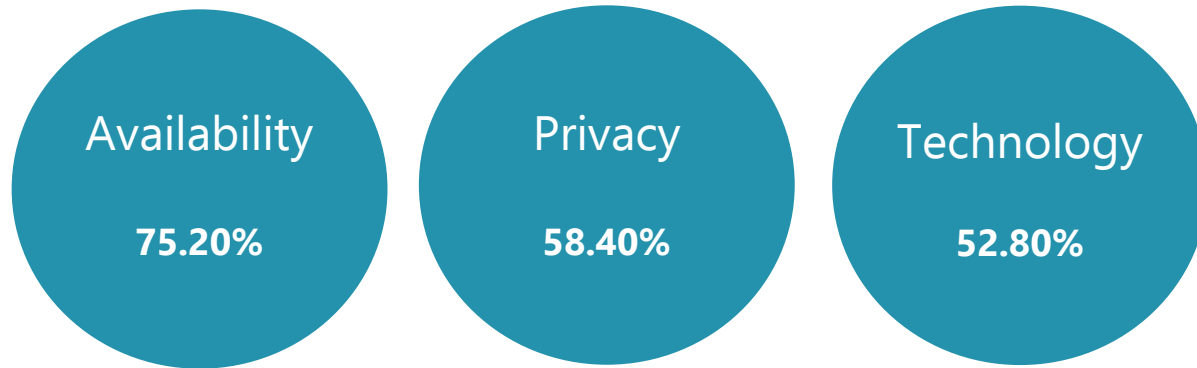
Survey Summary

Prioritizing Spaces (top two answers)

	NOT IMPORTANT	SOMEWHAT IMPORTANT	IMPORTANT	VERY IMPORTANT	MANDATORY
Improved Children's Area			●	●	
Children's Computers		●	●		
Larger Young Adult Area		●	●		
More computers	●		●		
More comfortable seating			●	●	
More study tables		●	●		
More parking			●	●	
More large group meeting rooms		●	●		
More space for group activities		●	●	●	
More quiet study areas		●	●		
Drink and snack area	●	●			
Makers Space	●		●		
Outdoor seating/gathering area	●	●			

Survey Summary

What is important to you in a meeting space? (top 3 answers)



How do you prefer to sit at the library? (top 3 answers)



What items would you use in a makers space? (top 6 answers)

1. Arts and crafts supplies – 53.76%
2. 3D printer – 51.61%
3. Large-scale paper printing – 49.46%
4. Large-scale digital scanner – 36.56%
5. High-quality digital cameras – 31.18%
6. Vinyl cutter – 31.18%

Survey Summary

What is the best thing about the Keene Memorial Library? (a sample of responses)

- The people working there have always been friendly and helpful.
- **The beautiful building and the amazing staff! We are fortunate to have such a nice library in this city.**
- Reserve system to get books. It is great!
- **Staff and children's programs!**
- Location!
- **That we have a great library with great services. The alternative would be sad for all.**
- Books to read, people I have met through involvement in library activities
- **I enjoy my time at the Library and am pleased with all of the information that is available. Things could be updated (as with anything) but I have never gone away empty handed!**
- I really enjoy the special events they host for kids.
- **Potential for being a community "hub".**
- Being there for me and others in the community.

Space Needs Program

KEENE MEMORIAL LIBRARY COLLECTION COUNTS: First Draft

DESIGN POPULATION

	Current	20 Year Projection			
Primary Service Area	26,479	26,667			
Non-Resident Service Population (Outside Freemont city limits)	10,722	10,399			
DESIGN POPULATION:					37,066

PROJECTED COLLECTION COUNTS

	Current	5% Growth Projection over 10 years	5% Growth Projection over 15 years	5% Growth Projection over 20 years	10 Year Projection Count	20 Year Projection Count
Books in all collections	87,210	142,053 volumes	181,300 volumes	231,390 volumes		231,390
Audio Books	6,215	10,125 volumes	NA	NA		10,125
Videos	3,250	5,292	NA	NA		5,292
Periodicals (display)	191	NA	NA	NA		191
Periodicals (back issue)	4,584	NA	NA	NA		4,584
Nonprint Materials	?	?	NA	NA		?
News print	?	NA	NA	NA		?
Newspaper back issues	?	NA	NA	NA		?
ADULT COLLECTION BREAKOUT:						
Fiction	19,797	32,245	41,153	52,520	2,150	3,500
Non Fiction	18,488	30,115	38,433	49,050	2,008	3,270
Spanish Fiction & Non Fiction	1,380	2,240	2,865	3,655	150	250
Periodical Display	180	NA	NA	NA	160	160
Audio Books	2,058	3,360	4,290	5,475	224	365
Non Print Materials	?	?	NA	NA		
DVD's (All Ages)	3,326	5,292	NA	NA	350	350
CD's (All Ages)	3,364	5,480	NA	NA	365	365
CHILDREN'S COLLECTION BREAKOUT:						
Fiction & Non Fiction	29,198	47,560	60,700	77,470	3,302	5,380
Spanish Fiction & Non Fiction	914	1,485	1,893	2,415	103	167
Periodical Display	3	3	NA	NA	20	20
CD's (Included with adult collection counts)						
YOUNG ADULT COLLECTION BREAKOUT:						
Books	4,757	6,340	8,090	10,325	422	688
Periodical Display	8	NA	NA	NA	40	40
PROJECTED COLLECTION:					9,294	14,555

KEENE MEMORIAL LIBRARY
03.23.18

DRAFT REVISION 2:

MEETING SPACE						
		Existing SF	SF	Projected QTY	Seat Counts	Total SF
	Self Serve Café		400	1		400
	Community Meeting Room		2,700	1	200	2,700
	FFE Storage		300	1		300
	MEETING/CLASSROOMS/STUDY ROOMS					
	Medium Meeting Room		185	2	8	370
	Small Meeting Room/AV Room		120	3	4	360
	Full Kitchen		200	1		200
MEETING SPACE SF Subtotal:						4,330
Grossing Factor:						1.30
MEETING SPACE DGSF Subtotal:						5,629

ADULT COLLECTION & SHARED SERVICES						
		Existing SF	SF	Projected QTY	Seat Counts	Total SF
	Public Entrance/Lobby		400	1		400
	Service Desk - First Floor		200	1		200
	Service Desk - Second Floor		150	1		150
	Copy Station		50	1		50
	Self Check-out Station		50	2		100
	Adult Collection		8,260	1		8,260
	Public Computers		30	20	20	600
	Reader Tables		110	14	56	1,540
	Lounge Chairs		45	30	30	1,350
ADULT COLLECTION & SHARED SERVICES SF Subtotal:						12,650
Grossing Factor:						1.30
ADULT COLLECTION & SHARED SERVICES DGSF Subtotal:						16,445

PROJECTED CHILDREN'S/TWEEN COLLECTION						
		Existing SF	SF	Projected QTY	Seat Counts	Total SF
	Youth Services Desk		175	1		175
	Children's Collection		5,567	1		5,567
	Children's Computers		180	1	6	180
	Youth Services Offices (5 people)		225	1	5	225
	Reader Tables - Children's		110	4	16	440
	Reader Tables - Tween's		110	3	12	330
	Reader Lounge Seating - Children's		30	8	8	240
	Reader Lounge Seating - Tween's		30	8	8	240
	Family Seating		30	4	4	120
	Manipulative Play Area		120	1		120
	Children's Activity/Multi-Purpose Room		900	1	40	900
	Family Restroom		60	1		60
PROJECTED CHILDREN'S/TWEEN COLLECTION SF Subtotal:						8,597
Grossing Factor:						1.30
PROJECTED CHILDREN'S/TWEEN COLLECTION DGSF Subtotal:						11,176

YOUNG ADULT SPACE						
		Existing SF	SF	Projected QTY	Seat Counts	Total SF
	YA Collection		725	1		725
	Computer Station		30	6	6	180
	Lounge Seating		30	8	8	240
	Reader Table		110	4	16	440
	Group Study Room		120	1	4	120
	YA Gaming Area		200	1		200
YOUNG ADULT SPACE SF Subtotal:						1,905
Grossing Factor:						1.30
YOUNG ADULT SPACE DGSF Subtotal:						2,477

PROJECTED STAFF AREAS					
	Existing SF	Square Feet	Projected QTY	Seat Counts	Total SF
Library Director Private Office		180	1	1	180
Senior Office Associate (Tracy)		100	1	1	100
Circulation Manager (Elisa)		50	1	1	50
Acquisitions/Processing (Ann)		50	2	2	100
Cataloging (Dorlissa)		50	1	1	50
Inter-Library Loan (Bob)		50	1	1	50
Information Technology Manager (Kelly)		150	1	1	150
Future Office		50	2	2	100
Staff Conference Room		120	1	4	120
Staff Lockers		50	1		50
Book Drop - Pedestrian & Drive up Window		100	1	2	100
Work Room		500	1	3	500
Storage Space		600	1		600
Break Room		350	1	8	350
Delivery Entrance/Loading Area		400	1		400
Friends Sales/Storage		300	1		300
Restroom		60	2		120
PROJECTED STAFF AREAS SF Subtotal:					3,320
Grossing Factor:					1.30
PROJECTED STAFF AREAS DGSF Subtotal:					4,316

MAKERS SPACE & GENEALOGY						
		Existing SF	Current Qty	Projected QTY	Seat Counts	Total SF
	Makers Space		500	1	6	500
	Genealogy Room		230	1		230
	Computer Stations		35	3	3	105
	Research/Meeting Table		120	1	8	120
MAKERS SPACE & GENEALOGY SF Subtotal:						955
Grossing Factor:						1.25
MAKERS SPACE & GENEALOGY DGSF Subtotal:						1,194

BUILDING SUPPORT						
		Existing SF	Current Qty	Projected QTY	Seat Counts	Total SF
	Restrooms		200	2		400
	Mechanical		1,200	1		1,200
	Custodial		50	1		50
	Server Room		150	1		150
	Elevator /Equipment Room		200	1		200
BUILDING SUPPORT SF Subtotal:						2,000
Grossing Factor:						1.25
BUILDING SUPPORT DGSF Subtotal:						2,500

GRAND TOTAL SQUARE FOOT REQUIREMENT						43,736
-------------------------------------	--	--	--	--	--	--------

	CITY	POPULATION OF LIBRARY SERVICE AREA	LAST CONSTRUCTION (NEW OR RENOVATION)	LIBRARY SIZE (SF)	USERS	ANNUAL CIRC. (ACCORDING TO NEB. LIB. COMMISSION 2012)
1	BEATRICE	12,459	2014	23,000	5,022	110,400
2	BELLEVUE	50,137	2012	20,973	27,524	323,953
3	COLUMBUS	32,847	1977	33,000	12,845	194,324
4	FREMONT	26,722	2010	22,500	10,117	157,721
5	GRAND ISLAND	48,250	2007	48,852	39,044	335,268
6	HASTINGS	31,364	2017	33,000	28,441	266,114
7	KEARNEY	30,787	2011	49,052	40,705	513,107
8	LA VISTA	15,758	1999	23,316	2,337	156,522
9	LEXINGTON	10,230	2005	18,500	8,578	58,702
10	NORFOLK	24,210	2017	22,000	14,990	299,776
11	NORTH PLATTE	24,733	2007	20,178	18,056	258,925
12	PAPILLION	18,894	2016	23,000	19,324	257,739
13	SCOTTSBLUFF	15,039	2011	22,800	21,381	143,730
14	BLAIR	8,089	2017	27,000	8,275	126,386
15	SOUTH SIOUX CITY	13,353	2004	16,385	7,548	47,790

Program Summary: Optimization of Space

- 15-20 years of collection growth
- Improved program support
- Optimized space for more effective staff work
- Versatility for different activities
- Flexible library space with appropriate open plan areas
- Meeting and quiet spaces of varying sizes
- Use of Community meeting room during library off-hours

Program Summary: Improved Adjacencies

- Improves personnel coverage
- Simplifies & improves access
- Orients users
- Accommodates growth
- Balances resources
- Facilitates self-instruction

Program Summary: Improved Security, Accessibility & Natural Light

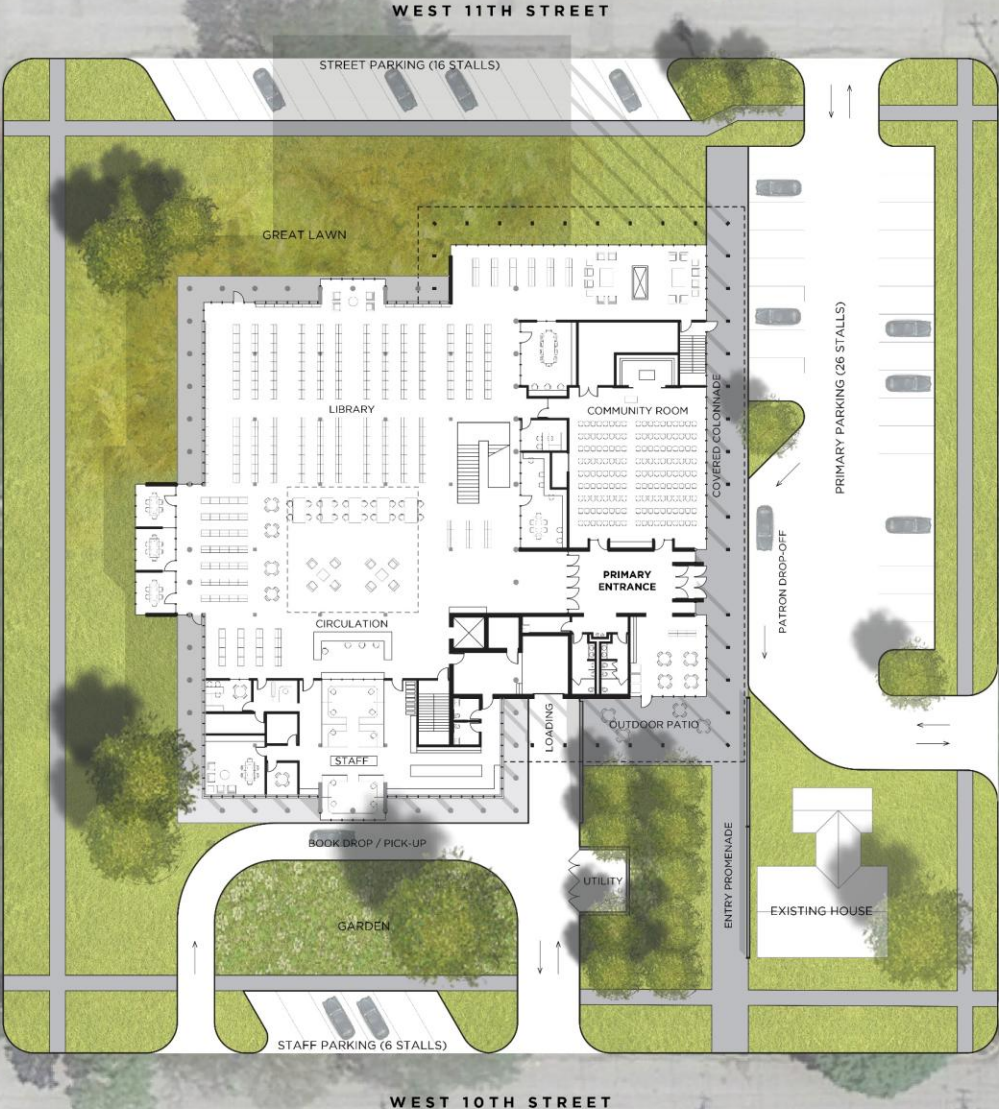
- Improved security (sight lines throughout the building)
- Visible services points
- Intuitive wayfinding
- Visually secure entrances
- Children's area separate but visually connected
- Increased interior natural lighting
- Library collection stacks lowered for increased accessibility
- ADA compliant restrooms
- Children's/Family restroom

Conceptual Floor Plans

KEENE MEMORIAL LIBRARY
RENOVATION & ADDITION

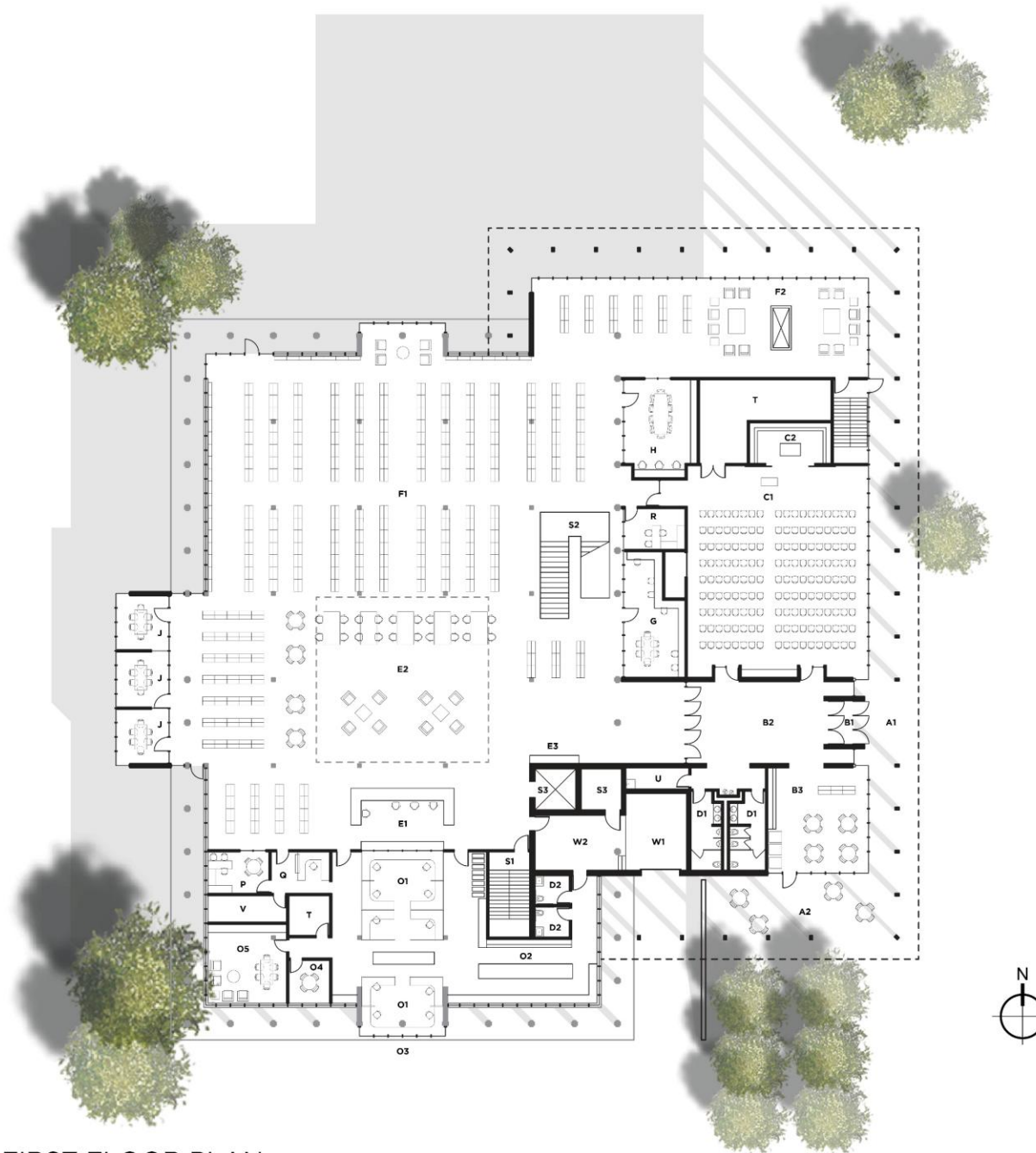


PROPOSED SITE PLAN



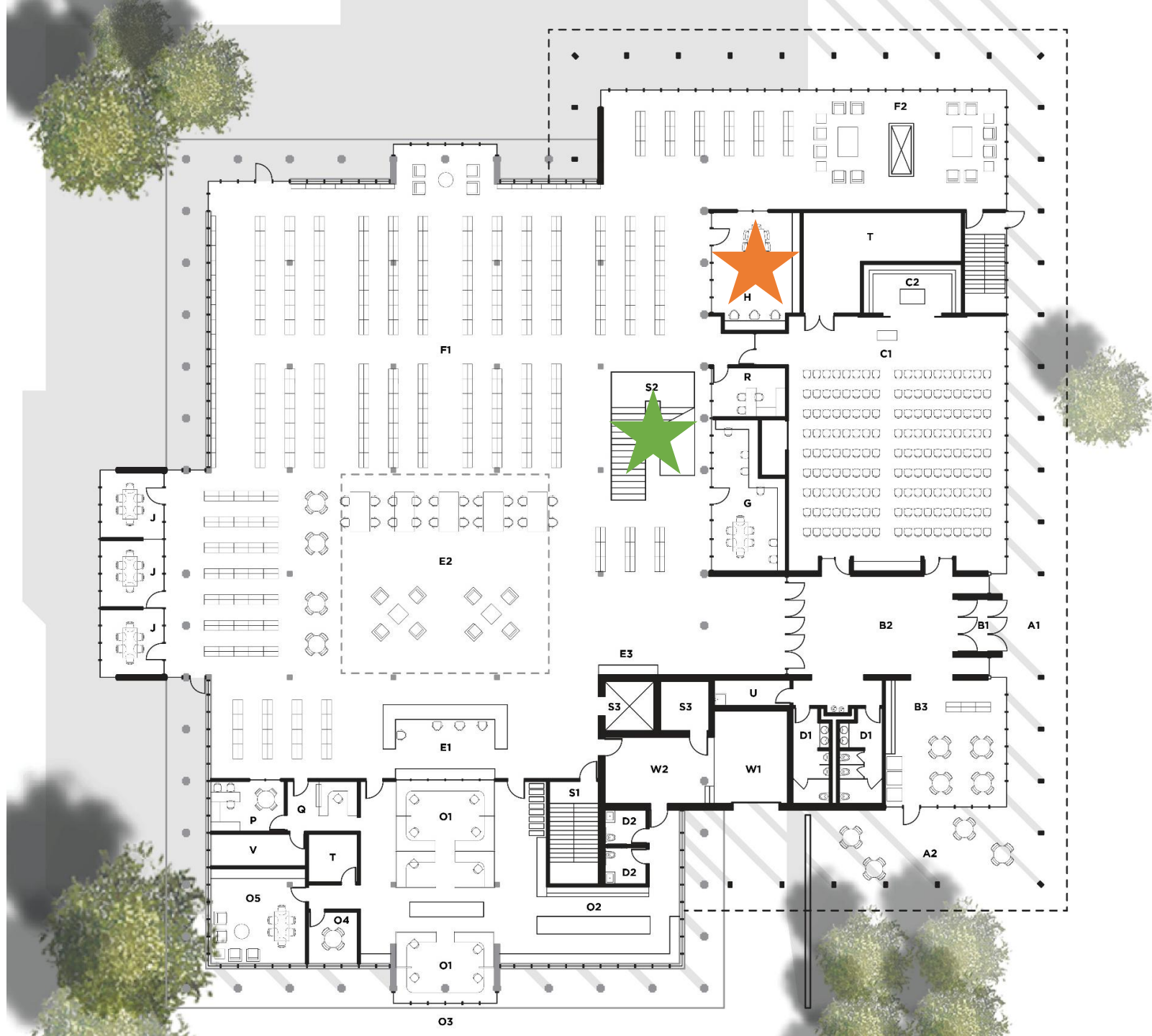
OVERFLOW PARKING (STALL QUANTITY TBD)



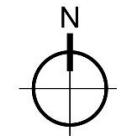


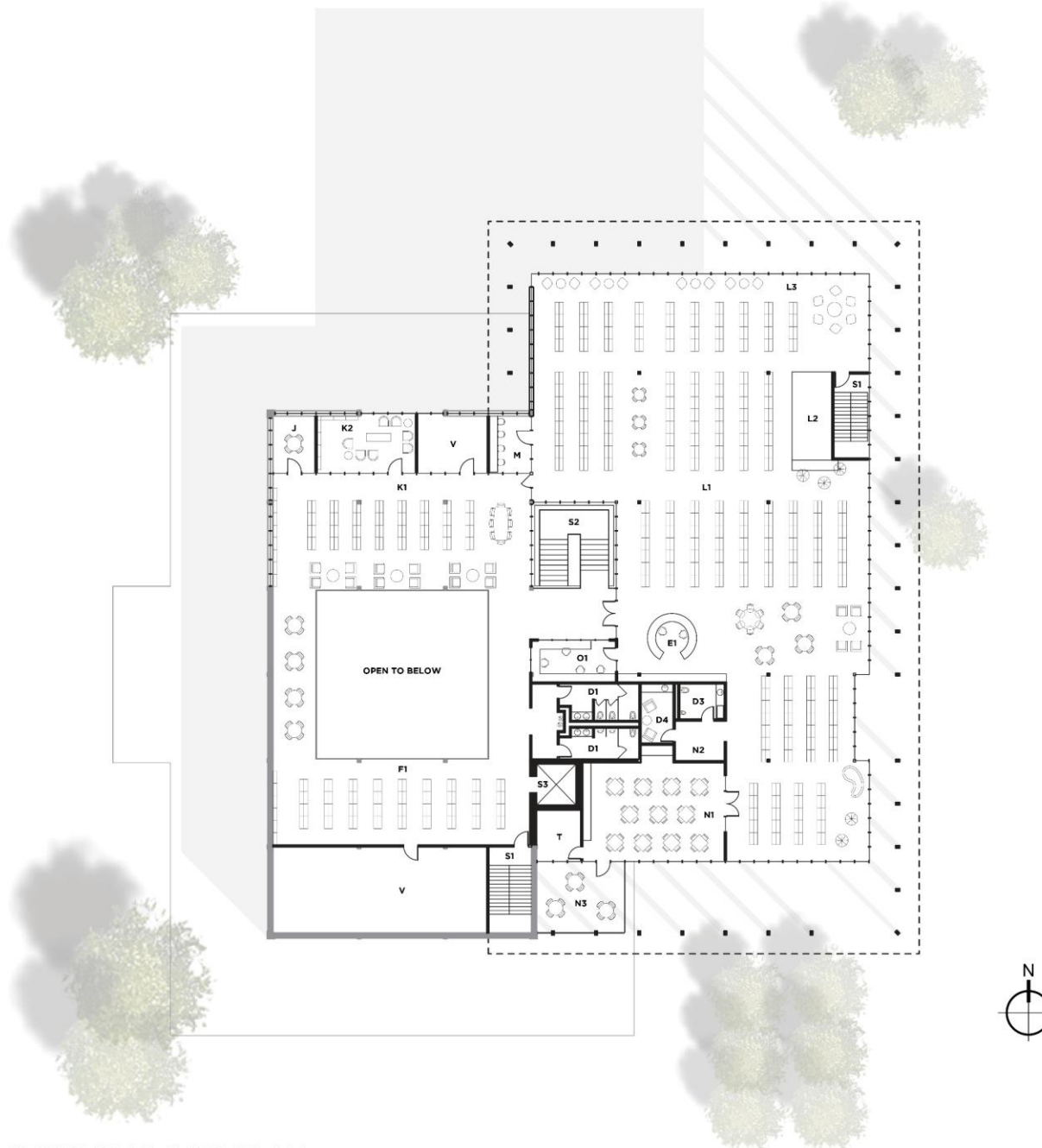
- A1 COVERED ENTRY COLONNADE
- A2 COVERED OUTDOOR PATIO
- B1 ENTRY VESTIBULE
- B2 LOBBY
- B3 CAFE / FRIENDS OF THE LIBRARY
- C1 COMMUNITY ROOM
- C2 CATERING / TEACHING KITCHEN
- D1 PUBLIC RESTROOM
- D2 STAFF RESTROOM
- D3 FAMILY RESTROOM
- D4 WELLNESS ROOM
- E1 CIRCULATION DESK
- E2 INFORMATION COMMONS
- E3 SELF-CHECK
- F1 ADULT COLLECTION
- F2 FIREPLACE READING ROOM
- G ADULT MAKER'S SPACE
- H GENEALOGY ROOM (CHANDELIER LOCATION)
- J GROUP STUDY / MEETING ROOM
- K1 YOUNG ADULT COLLECTION
- K2 GAME ROOM
- L1 CHILDREN'S COLLECTION
- L2 CHILDREN'S IMAGINATION CENTER
- L3 CHILDREN'S READING ROOM
- M CHILDREN'S MAKER'S SPACE
- N1 CHILDREN'S ACTIVITY ROOM
- N2 STROLLER PARKING
- N3 CHILDREN'S OUTDOOR ROOF DECK
- O1 STAFF OFFICES
- O2 WORKROOM
- O3 BOOK DROP / PICK-UP
- O4 CONFERENCE ROOM
- O5 BREAK ROOM
- P DIRECTOR'S OFFICE
- Q OFFICE ASSOCIATE
- R IT OFFICE
- S1 STAIR - EGRESS
- S2 STAIR - FEATURE (LA BREZZA LOCATION)
- S3 ELEVATOR / MACHINE ROOM
- T STORAGE
- U JANITOR
- V MECHANICAL / ELECTRICAL
- W1 GARAGE
- W2 LOADING

PROPOSED FIRST FLOOR PLAN



- A1 COVERED ENTRY COLONNADE
- A2 COVERED OUTDOOR PATIO
- B1 ENTRY VESTIBULE
- B2 LOBBY
- B3 CAFE / FRIENDS OF THE LIBRARY
- C1 COMMUNITY ROOM
- C2 CATERING / TEACHING KITCHEN
- D1 PUBLIC RESTROOM
- D2 STAFF RESTROOM
- D3 FAMILY RESTROOM
- D4 WELLNESS ROOM
- E1 CIRCULATION DESK
- E2 INFORMATION COMMONS
- E3 SELF-CHECK
- F1 ADULT COLLECTION
- F2 FIREPLACE READING ROOM
- G ADULT MAKER'S SPACE
- H GENEALOGY ROOM (CHANDELIER LOCATION)
- J GROUP STUDY / MEETING ROOM
- K1 YOUNG ADULT COLLECTION
- K2 GAME ROOM
- L1 CHILDREN'S COLLECTION
- L2 CHILDREN'S IMAGINATION CENTER
- L3 CHILDREN'S READING ROOM
- M CHILDREN'S MAKER'S SPACE
- N1 CHILDREN'S ACTIVITY ROOM
- N2 STROLLER PARKING
- N3 CHILDREN'S OUTDOOR ROOF DECK
- O1 STAFF OFFICES
- O2 WORKROOM
- O3 BOOK DROP / PICK-UP
- O4 CONFERENCE ROOM
- O5 BREAK ROOM
- P DIRECTOR'S OFFICE
- Q OFFICE ASSOCIATE
- R IT OFFICE
- S1 STAIR - EGRESS
- S2 STAIR - FEATURE (LA BREZZA LOCATION)
- S3 ELEVATOR / MACHINE ROOM
- T STORAGE
- U JANITOR
- V MECHANICAL / ELECTRICAL
- W1 GARAGE
- W2 LOADING





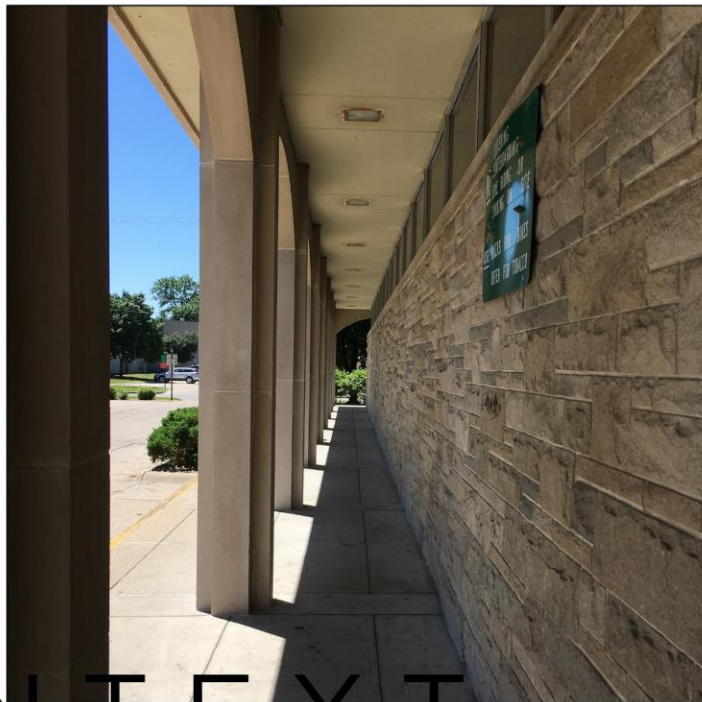
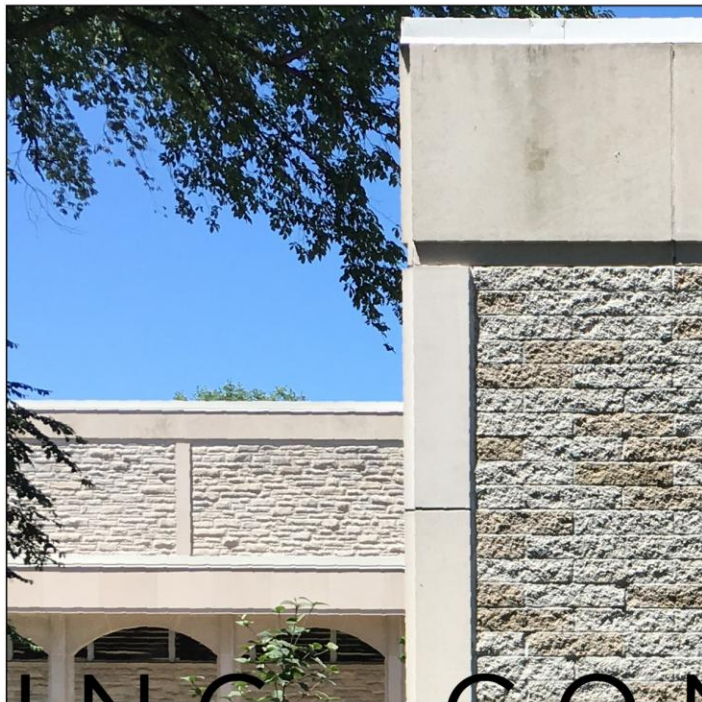
- A1 COVERED ENTRY COLONNADE
- A2 COVERED OUTDOOR PATIO
- B1 ENTRY VESTIBULE
- B2 LOBBY
- B3 CAFE / FRIENDS OF THE LIBRARY
- C1 COMMUNITY ROOM
- C2 CATERING / TEACHING KITCHEN
- D1 PUBLIC RESTROOM
- D2 STAFF RESTROOM
- D3 FAMILY RESTROOM
- D4 WELLNESS ROOM
- E1 CIRCULATION DESK
- E2 INFORMATION COMMONS
- E3 SELF-CHECK
- F1 ADULT COLLECTION
- F2 FIREPLACE READING ROOM
- G ADULT MAKER'S SPACE
- H GENEALOGY ROOM (CHANDELIER LOCATION)
- J GROUP STUDY / MEETING ROOM
- K1 YOUNG ADULT COLLECTION
- K2 GAME ROOM
- L1 CHILDREN'S COLLECTION
- L2 CHILDREN'S IMAGINATION CENTER
- L3 CHILDREN'S READING ROOM
- M CHILDREN'S MAKER'S SPACE
- N1 CHILDREN'S ACTIVITY ROOM
- N2 STROLLER PARKING
- N3 CHILDREN'S OUTDOOR ROOF DECK
- O1 STAFF OFFICES
- O2 WORKROOM
- O3 BOOK DROP / PICK-UP
- O4 CONFERENCE ROOM
- O5 BREAK ROOM
- P DIRECTOR'S OFFICE
- Q OFFICE ASSOCIATE
- R IT OFFICE
- S1 STAIR - EGRESS
- S2 STAIR - FEATURE (LA BREZZA LOCATION)
- S3 ELEVATOR / MACHINE ROOM
- T STORAGE
- U JANITOR
- V MECHANICAL / ELECTRICAL
- W1 GARAGE
- W2 LOADING

PROPOSED SECOND FLOOR PLAN

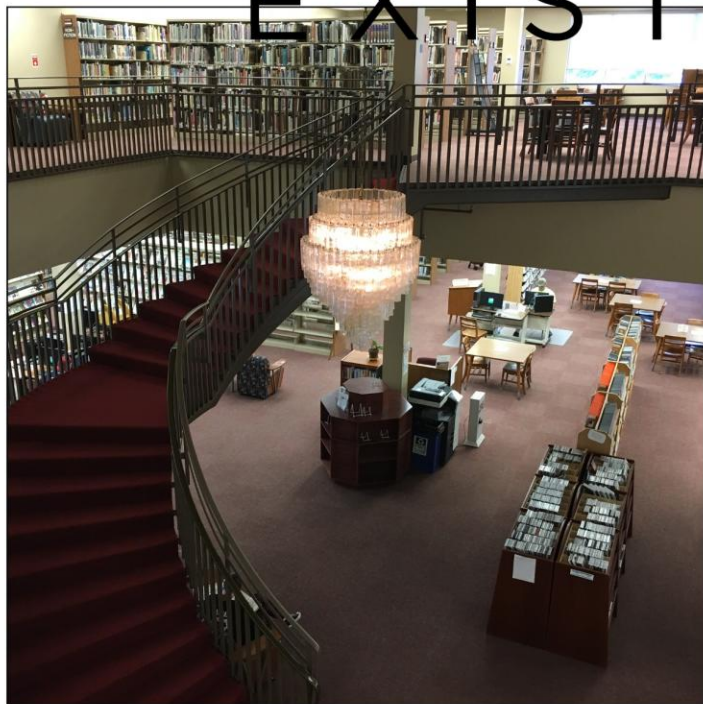


- A1 COVERED ENTRY COLONNADE
- A2 COVERED OUTDOOR PATIO
- B1 ENTRY VESTIBULE
- B2 LOBBY
- B3 CAFE / FRIENDS OF THE LIBRARY
- C1 COMMUNITY ROOM
- C2 CATERING / TEACHING KITCHEN
- D1 PUBLIC RESTROOM
- D2 STAFF RESTROOM
- D3 FAMILY RESTROOM
- D4 WELLNESS ROOM
- E1 CIRCULATION DESK
- E2 INFORMATION COMMONS
- E3 SELF-CHECK
- F1 ADULT COLLECTION
- F2 FIREPLACE READING ROOM
- G ADULT MAKER'S SPACE
- H GENEALOGY ROOM (CHANDELIER LOCATION)
- J GROUP STUDY / MEETING ROOM
- K1 YOUNG ADULT COLLECTION
- K2 GAME ROOM
- L1 CHILDREN'S COLLECTION
- L2 CHILDREN'S IMAGINATION CENTER
- L3 CHILDREN'S READING ROOM
- M CHILDREN'S MAKER'S SPACE
- N1 CHILDREN'S ACTIVITY ROOM
- N2 STROLLER PARKING
- N3 CHILDREN'S OUTDOOR ROOF DECK
- O1 STAFF OFFICES
- O2 WORKROOM
- O3 BOOK DROP / PICK-UP
- O4 CONFERENCE ROOM
- O5 BREAK ROOM
- P DIRECTOR'S OFFICE
- Q OFFICE ASSOCIATE
- R IT OFFICE
- S1 STAIR - EGRESS
- S2 STAIR - FEATURE (LA BREZZA LOCATION)
- S3 ELEVATOR / MACHINE ROOM
- T STORAGE
- U JANITOR
- V MECHANICAL / ELECTRICAL
- W1 GARAGE
- W2 LOADING

Proposed Materials



EXISTING CONTEXT





HORIZONTAL



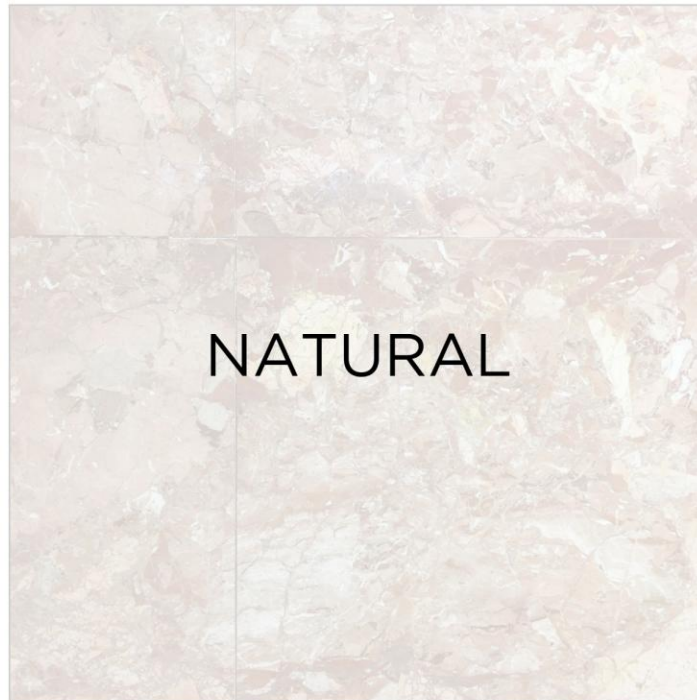
FORMAL



REPETITIVE



VOLUMETRIC



NATURAL



PERMANENT

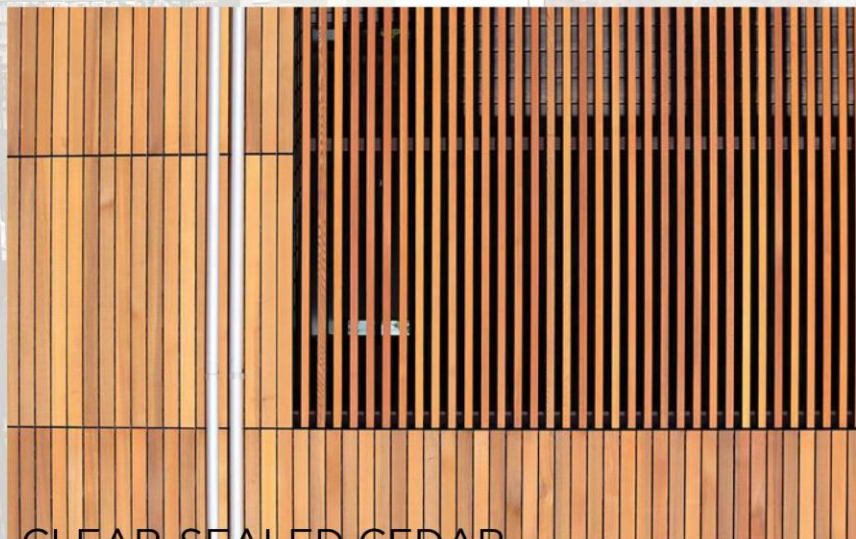
HONED NATURAL STONE



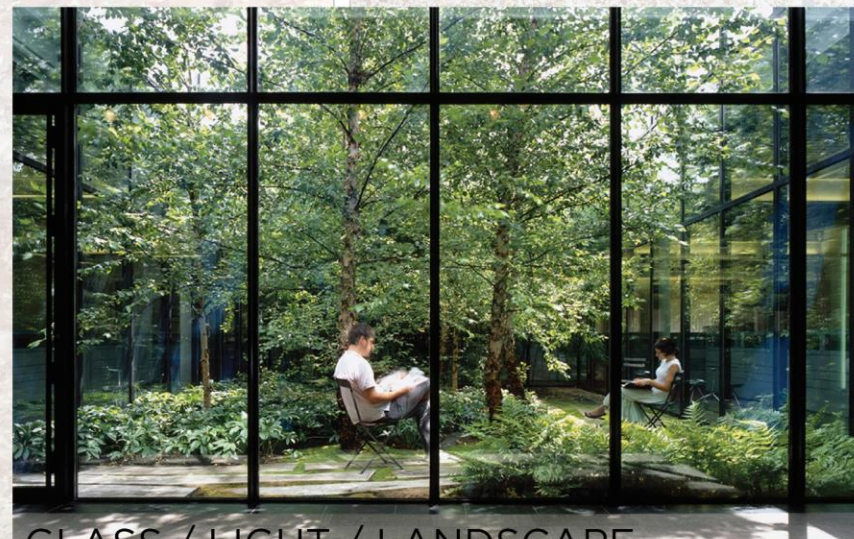
WHITE PRECAST CONCRETE



CLEAR-SEALED CEDAR



GLASS / LIGHT / LANDSCAPE



Conceptual Renderings



VIEW OF ENTRY PROMENADE FROM WEST 10TH STREET - LOOKING NORTHWEST



VIEW OF INFORMATION COMMONS FROM EXISTING BUILDING - LOOKING NORTHEAST

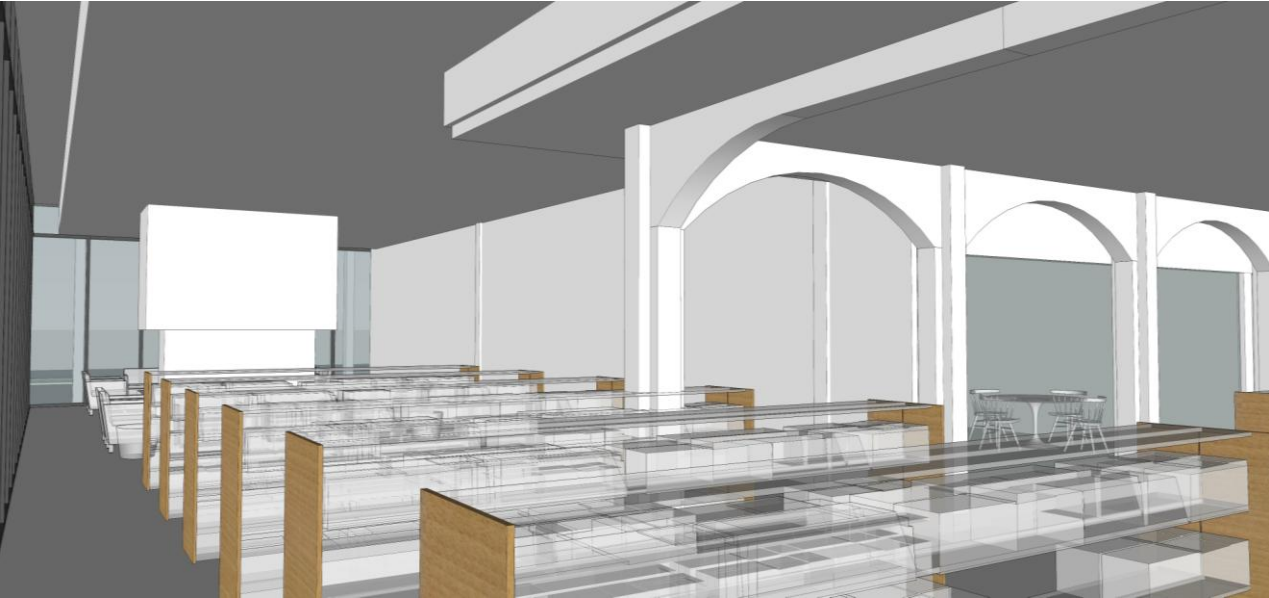
1. ADULT CIRCULATION DESK LOOKING NORTH



2. FEATURE STAIR LOOKING NORTH



3. FIREPLACE READING ROOM LOOKING EAST



4. CHILDREN'S COLLECTION LOOKING NORTHWEST





KEENE MEMORIAL LIBRARY

VIEW OF MAIN ENTRY FROM NORTH PARK AVENUE - LOOKING WEST

Cost Benchmarking

Columbus Library

- New Construction
 - \$320/SF
- 44,650 SF

\$14,288,000 Total*

Norfolk Library

- New Construction
 - \$284/SF
- Renovation
 - \$116/SF
- 39,988 SF

\$7,251,248 Total*

Keene Library

- Renovation
 - \$115 - \$125/SF
 - 24,000 Existing SF
 - \$2,760,000 - \$3,000,00
- New Construction
 - \$300 - \$350/SF
 - 20,680 New SF
 - \$6,204,000 - \$7,238,000

\$8,964,000 - \$10,238,000

* 5% escalation factor included

Keene Library

- Estimated Construction Costs:

\$8,964,000 - \$10,238,000

- Estimated FF&E (10% of construction):

\$896,400 - \$1,023,800

- Estimated Soft Costs (12% of construction):

\$1,075,680 - \$1,228,560

Estimated Project Cost:

\$10,936,080 - \$12,490,360 *

* Factor an additional 5% per year for escalation

Thank You!

Questions?